

Corporate Tower

101 N Robinson Ave, Oklahoma City 73102



Downtown Office for Sublease

NWC of Main and N Robinson in Downtown Oklahoma City

Available SF: 4,521 RSF

Lease Rate: \$16.00/sf FSG

Lease Expiration: 2/28/2021

Space amenities: First floor space, with kitchen, 3 offices, 9' ceilings, ample windows and open floor plan. Cubicles included in the lease.

Building amenities:

- Class A building with on-site security guard and direct Skywalk Access
- Multiple telecommunications service providers.
- UPS available for backup to provide a controlled shutdown.
- Storage space available in the building's basement.

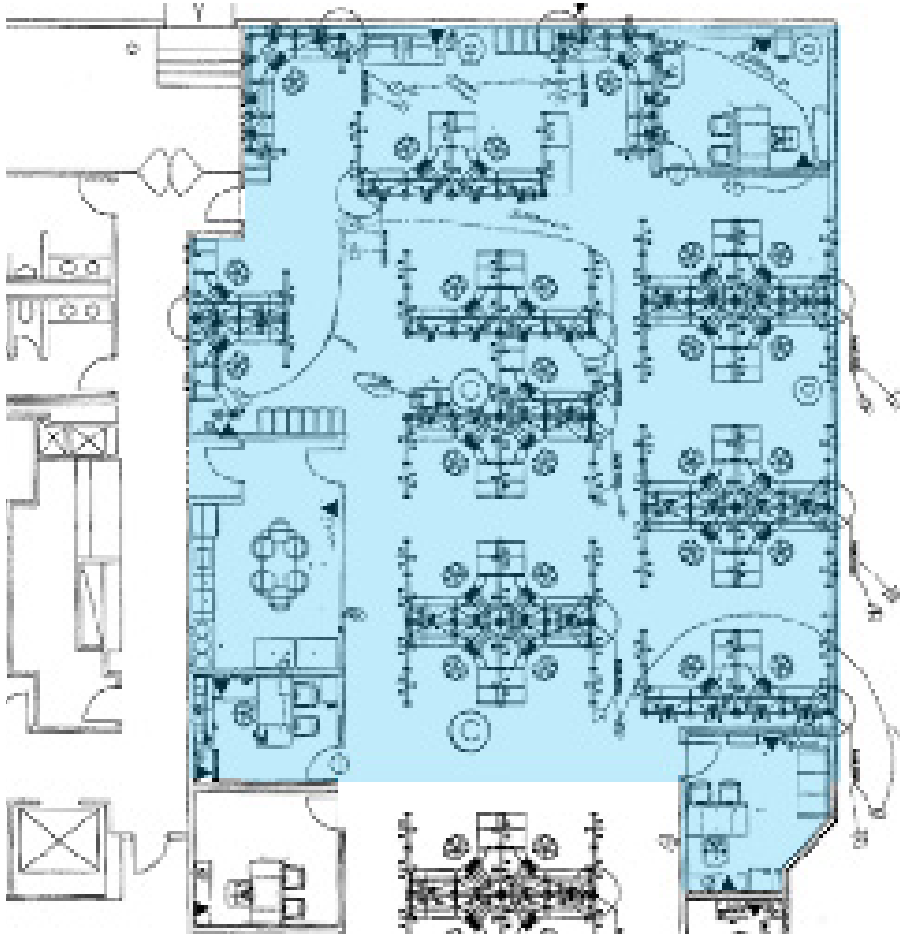
Parking: Directly across from the Main Street and Century Center parking garages

Call Matt Ralls today at **405.842.0100**

Corporate Tower

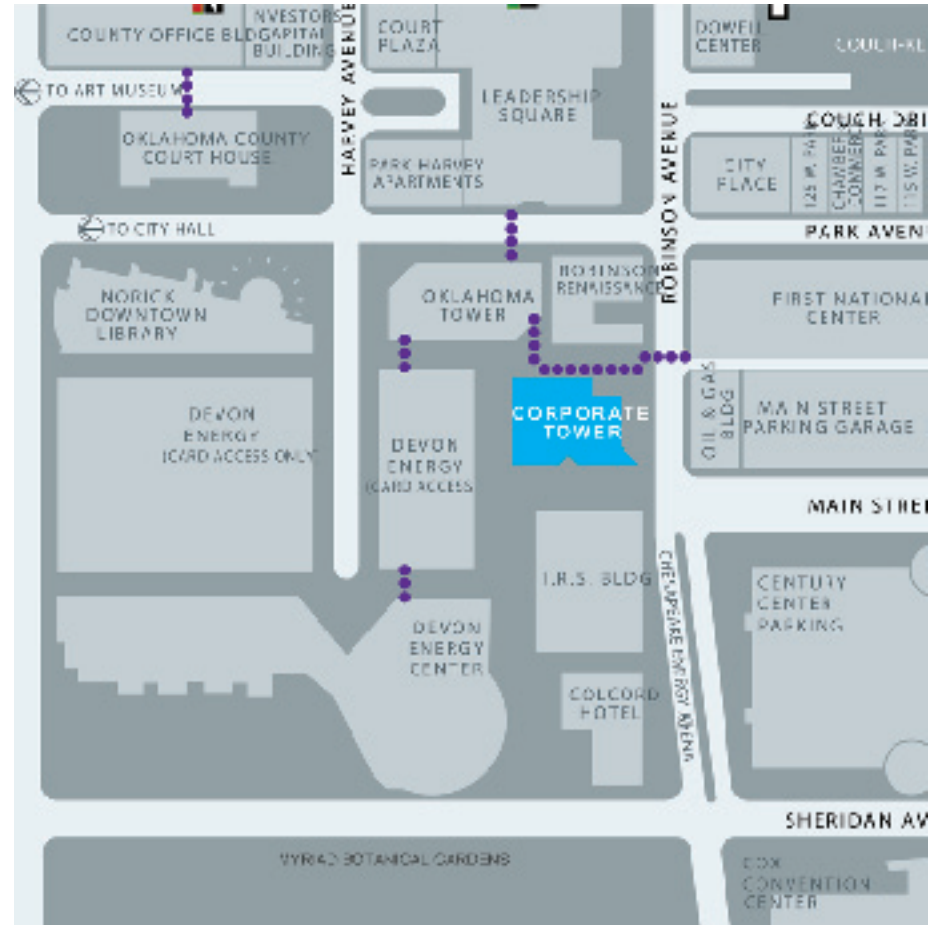
101 N Robinson Ave, Oklahoma City 73102

Floor Plan with Furnishings



Downtown Oklahoma City Location

••• Skybridge



Call Matt Ralls today at **405.842.0100**

mralls@wigginprop.com | wigginprop.com