

# Corporate Tower

101 N Robinson Ave, Oklahoma City 73102



## Downtown Office for Sublease

NWC of Main and N Robinson in Downtown Oklahoma City

Available SF: 4,521 RSF

Lease Rate: \$18.50/sf FSG

Lease Expiration: 2/28/2021

Space amenities: First floor space, with kitchen, 3 offices, 9' ceilings, ample windows and open floor plan. Cubicles included in the lease.

Building amenities:

- Class A building with on-site security guard and direct Skywalk Access
- Multiple telecommunications service providers.
- UPS available for backup to provide a controlled shutdown.
- Storage space available in the building's basement.

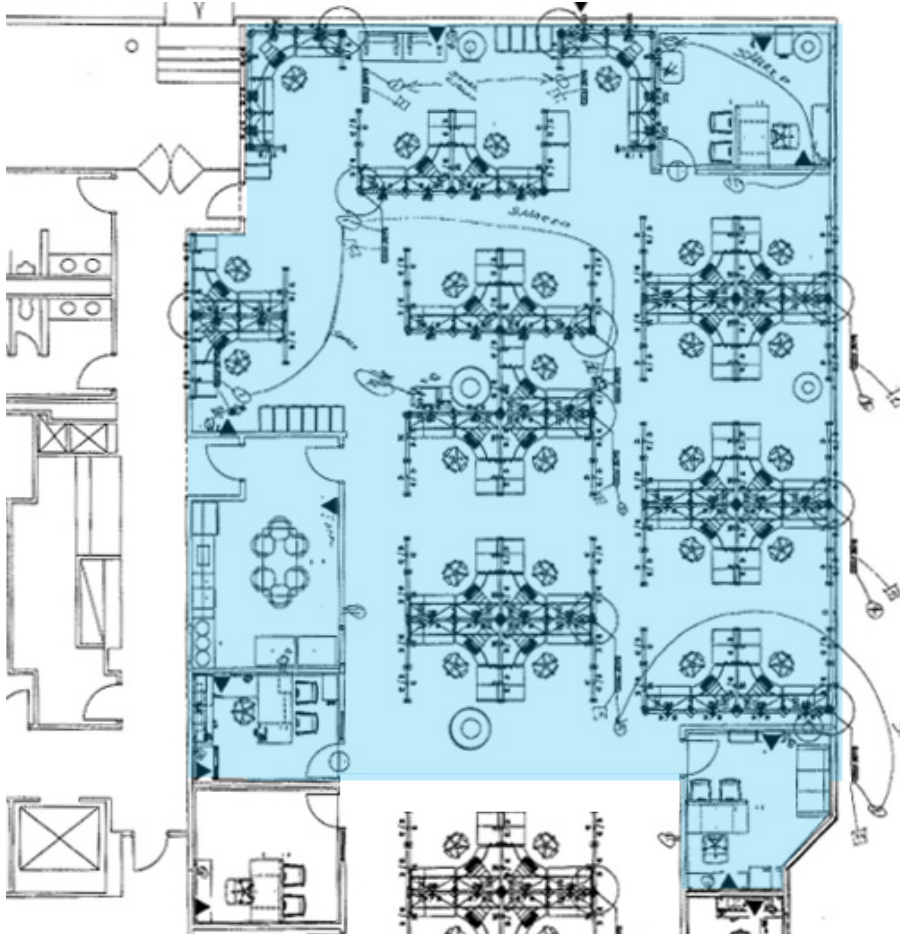
Parking: Directly across from the Main Street and Century Center parking garages

Call Julie Kriegel or Matt Ralls today at **405.842.0100**

# Corporate Tower

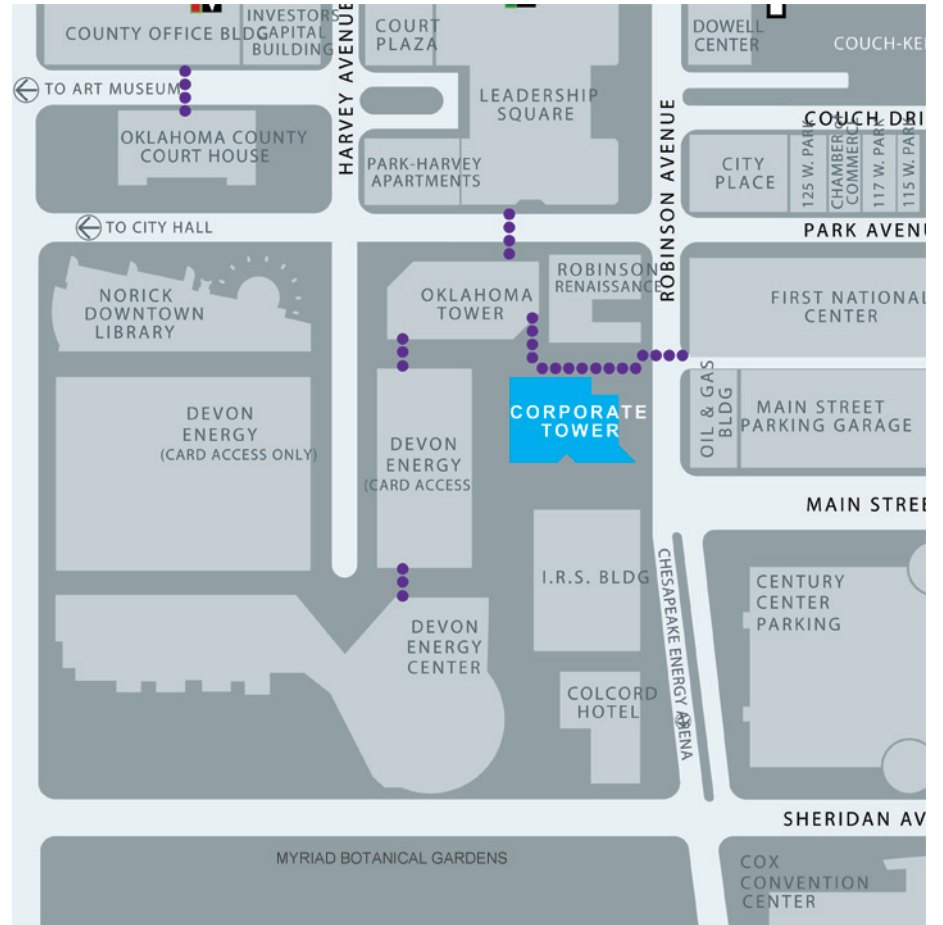
101 N Robinson Ave, Oklahoma City 73102

## Floor Plan with Furnishings



## Downtown Oklahoma City Location

●●● Skybridge



Call Julie Kriegel or Matt Ralls today at **405.842.0100**

[jkriegel@wiginprop.com](mailto:jkriegel@wiginprop.com) | [mralls@wiginprop.com](mailto:mralls@wiginprop.com) | [wiginprop.com](http://wiginprop.com)