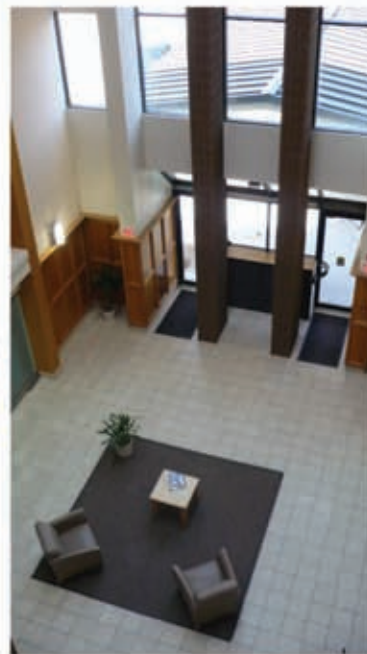


OFFICE FOR LEASE

Meridian Park (13321 N Meridian)

WIGGIN

PROPERTIES, LLC



Property Type: Office/Medical Office

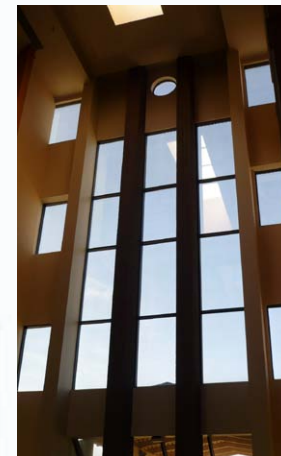
Space: 600- 10,200 SF

Rate: \$16/FSG

Parking: Ample parking for employees and clients

Highlights:

- Four story atrium lobby with skylight



- Professional landscaping
- Two glass elevators
- Large balconies with views of Martin Nature Park
- Customizable space
- Prestigious medical area
- Growing corporate component
- Professional and friendly environment



Sam Vinall

Phone: 405.842.0100

Fax: 405.848.1061

svinall@wigginprop.com

Wiggin Properties, LLC

5801 N. Broadway

Suite 120

Oklahoma City, OK 73118

OFFICE FOR LEASE

Meridian Park (13321 N Meridian)

WIGGIN

PROPERTIES, LLC



Location:

- Fastest growing area of OKC
- Between Mercy Hospital and Martin Nature Park
- Just south of Memorial Rd and the Kilpatrick Turnpike
- Close to Gaillardia Office Park, the Procure Cancer Center and Oklahoma Heart Hospital

Additional Information:
www.wigginprop.com

842-0100

This material is provided for information purposes only. It is from sources believed to be reliable. However, Wiggin Properties makes no warranties or representations, expressed or implied, as to the accuracy or sufficiency of the information. It is presented subject to errors, omissions, changes or withdrawal without notice.