

# OFFICE SPACE FOR LEASE

11330 N May Ave

# WIGGIN

PROPERTIES, LLC



- Type:** Office/Retail
- Size:** 1,702 SF
- Rate:** \$9.25/SF
- Parking:** Ample shared parking
- Highlights:**
- Built in 1979
  - Good frontage on May Ave
  - Professional landscaping



## Don Faulkner

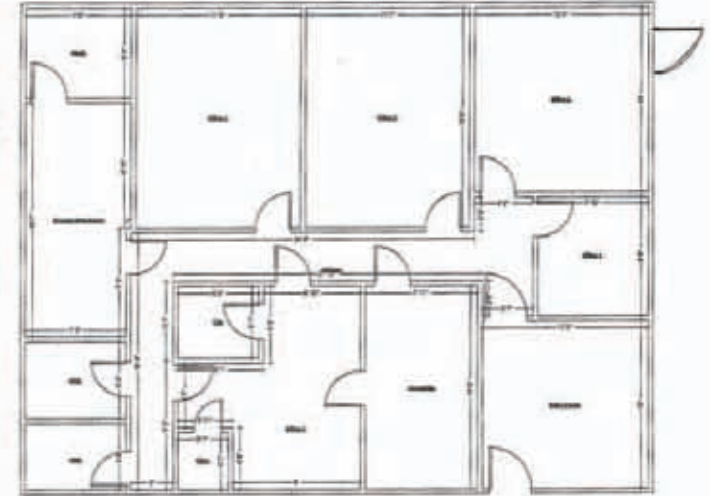
Phone: 405.842.0100  
Fax: 405.848.1061  
dfaulkner@wigginprop.com  
Wiggin Properties, LLC  
5801 N. Broadway  
Suite 120  
Oklahoma City, OK 73118

This material is provided for information purposes only. It is from sources believed to be reliable. However, Wiggin Properties makes no warranties or representations, expressed or implied, as to the accuracy or sufficiency of the information. It is presented subject to errors, omissions, changes or withdrawal without notice.

# OFFICE SPACE FOR LEASE

11330 N May Ave

**WIGGIN**  
PROPERTIES, LLC



## LOCATION

- On May Ave
- Excellent frontage
- Minutes from Lake Hefner Parkway and the Kilpatrick Turnpike
- Just south of Northpark Mall
- Minutes from downtown Edmond and Oklahoma City

## DEMOGRAPHICS

Average Household Income  
2010 Population

1 Miles

\$70,463  
14,411

3 Miles

\$65,362  
63,657

## TRAFFIC COUNT

23,820

## Additional Information:

[www.wigginprop.com](http://www.wigginprop.com)